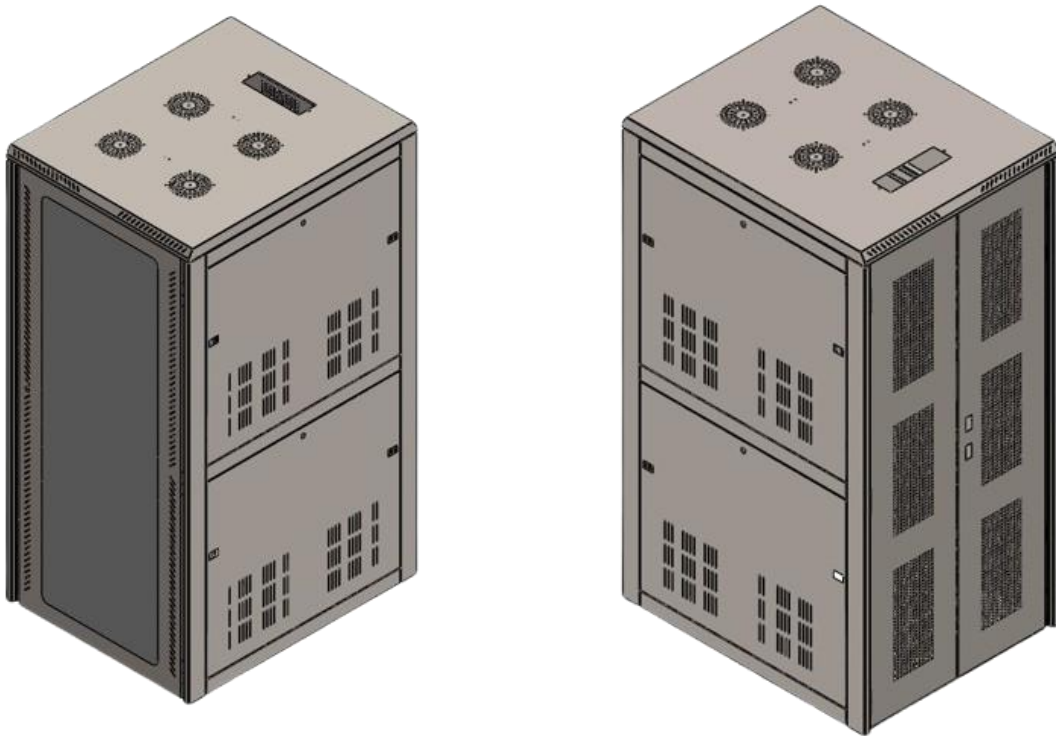


Floor Standing Rack



Genius floor-standing rack is EIA-310 compliant and constructed from heavy-duty CRCA steel, supporting from 400 Kg to 1250 kg static load. It features a lockable glass front door or Mesh Door or perforated door options to ensure efficient airflow and compatibility with hot-aisle/cold-aisle configurations. The rack is equipped with adjustable 19-inch mounting rails with clear U-marking for easy and accurate equipment installation. The top panel includes cable entry along with provisions for fan mounting, while the bottom panel is dedicated to cable entry for organized routing. Finished with high-quality epoxy powder coating for enhanced durability, the rack supports a wide range of accessories. It complies with DIN and IEC standards, offers IP20 protection and IK08 impact resistance, and is certified under ISO, CE, and RoHS requirements.

Key Features

- Conforms to DIN 41494 or Equivalent EIA /ISO / EN Standards
- Four adjustable 19" EIA-310 rails with 10 mm square holes, universal pitch (12.7–15.875–15.875 mm) and 44.45 mm spacing per DIN 41494
- Rigid all-round bolted steel construction with precision-formed, deburred components and concealed fasteners, featuring a reinforced front frame providing diagonal strength and torsional rigidity
- Lockable toughened Glass door / Mesh Door / Perforated door for secure equipment monitoring and better ventilation
- Ventilated top & bottom covers. 2 or 4 Fan Mount provision on top cover
- Cable entry top & bottom with rubber grommets; optional brush cutout
- Horizontal split side panels are included for easy access and operation
- High-quality epoxy-polyester powder coating (60–80 microns) for long Sustainability
- Multiple Rack Accessories are available as optional
- Maximum load carrying capacity ranges from 400 Kg to 1250 Kg depending on rack Configuration
- Complies with IS 9606, DIN 41494 & IEC 60297; IP20 (IEC 60529) & IK08 (IEC 62262) rated; manufactured under ISO 9001, 45001 & 14001 systems
- CE Certified & RoHS Compliant
- Genius Network comprehensive warranty for one year

Product Specification

Material	CRCA Steel
Construction	SKD / Assembled
Side panel	Horizontal split side panel
Top Cover	Ventilated top includes fan provision Cable entry via rubber grommets
Bottom Cover	Ventilated Bottom; Cable entry via rubber grommets
Front Door	Toughened glass door or Perforated door
Back Door	Perforated door or Mesh door (Double or Single)
Standard Mounting	DIN standard 10 mm square slots. Hole Pattern, (12.7 mm – 15.875 mm – 15.875 mm)
Finishing	Epoxy polyester powder coated
Standard Color	Grey RAL 7035 & RAL 7037 (Dual Tone) Black RAL 9005
Static Load	400 Kg to 1250 Kg (Depending on Rack Configuration)

Dimensional Specification

Product Series	Height (H)	Usable Height (h)	Width (W)	Usable Width (w)	Depth (D)	Usable Depth (d)
17U	600 x 600	899	17U	600	19"	477
	600 x 800	899	17U	600	19"	677
22U	600 x 600	1121	22U	600	19"	477
	600 x 800	1121	22U	600	19"	677
	600 x 1000	1121	22U	600	19"	877
24U	600 x 600	1210	24U	600	19"	477
	600 x 800	1210	24U	600	19"	677
	600 x 1000	1210	24U	600	19"	877
	800 x 800	1210	24U	800	19"	677
	800 x 1000	1210	24U	800	19"	877
27U	600 x 600	1343	27U	600	19"	477
	600 x 800	1343	27U	600	19"	677
	600 x 1000	1343	27U	600	19"	877
	800 x 800	1343	27U	800	19"	677
	800 x 1000	1343	27U	800	19"	877
33U	600 x 600	1610	33U	600	19"	477
	600 x 800	1610	33U	600	19"	677
	600 x 1000	1610	33U	600	19"	877
	600 x 1200	1610	33U	800	19"	1077
	800 x 800	1610	33U	800	19"	677
	800 x 1000	1610	33U	800	19"	877
	800 x 1200	1610	33U	800	19"	1077
36U	600 x 600	1744	36U	600	19"	477
	600 x 800	1744	36U	600	19"	677
	600 x 1000	1744	36U	600	19"	877
	600 x 1200	1744	36U	800	19"	1077
	800 x 800	1744	36U	800	19"	677
	800 x 1000	1744	36U	800	19"	877
	800 x 1200	1744	36U	800	19"	1077

Note - All dimensions are in mm unless otherwise specified. 1U Equals to 44.5mm/1.75"

Product Series	Height (H)	Usable Height (h)	Width (W)	Usable Width (w)	Depth (D)	Usable Depth (d)
42U	600 x 600	2010	42U	600	19"	477
	600 x 800	2010	42U	600	19"	677
	600 x 1000	2010	42U	600	19"	877
	600 x 1200	2010	42U	800	19"	1077
	800 x 800	2010	42U	800	19"	677
	800 x 1000	2010	42U	800	19"	877
	800 x 1200	2010	42U	800	19"	1077
45U	600 x 600	2143	45U	600	19"	477
	600 x 800	2143	45U	600	19"	677
	600 x 1000	2143	45U	600	19"	877
	600 x 1200	2143	45U	800	19"	1077
	800 x 800	2143	45U	800	19"	677
	800 x 1000	2143	45U	800	19"	877
	800 x 1200	2143	45U	800	19"	1077
48U	600 x 600	2277	48U	600	19"	477
	600 x 800	2277	48U	600	19"	677
	600 x 1000	2277	48U	600	19"	877
	600 x 1200	2277	48U	800	19"	1077
	800 x 800	2277	48U	800	19"	677
	800 x 1000	2277	48U	800	19"	877
	800 x 1200	2277	48U	800	19"	1077

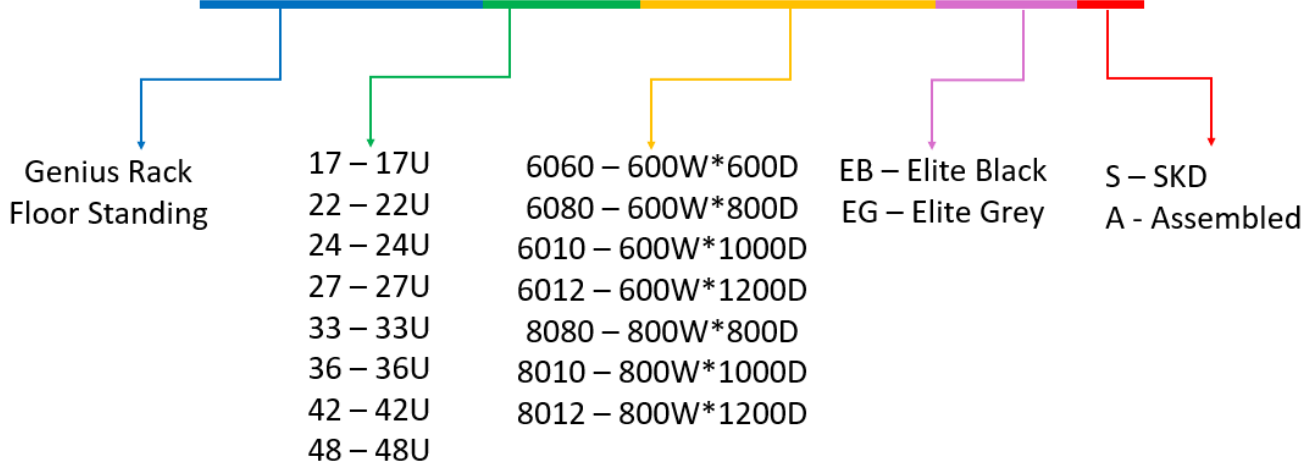
Note - All dimensions are in mm unless otherwise specified. 1U Equals to 44.5mm/1.75"

Standards, Certifications & Compliances

- RoHS Compliant & CE Certified
- Compliance with DIN 41494
- Compliance with 19-inch rack standard EIA-310
- Compliance with IEC 60297 for Cabinet
- Compliance with IEC 60529 / EN 60529 for IP 20 rating
- Compliance with IEC 62262 / EN 62262 for IK08 Impact Resistance
- Compliance with ISO 9227 (NSS) and IEC EN 60068-2-11 (Ka) for 168 hours salt spray test.
- Compliance with Rusting degree Ri1 as per ISO 4628-3; corrosion propagation ≤ 1 mm per ISO 4628-8
- Compliance with IS 9606-1980 for welding Quality
- Production in ISO 9001, ISO 14001 & ISO 45001 certified Manufacturing facilities

Ordering Information

GRFS A A B B B B X X Y



Sample Product Description - Genius Floor Standing 17U Rack 600Wx600D Elite Black SKD

Note –

- 17U Rack available in 600mm width with 600mm & 800mm depth options.
- 22U Rack available in 600mm width with 600mm, 800mm & 1000mm depth options.
- 24U & 27U Racks available in 600mm & 800mm widths with 600mm, 800mm & 1000mm depth options.
- 33U, 36U, 42U, 45U & 48U Racks available in all width & depth options

Floor Standing Rack Accessories

Rack Doors



Glass Door

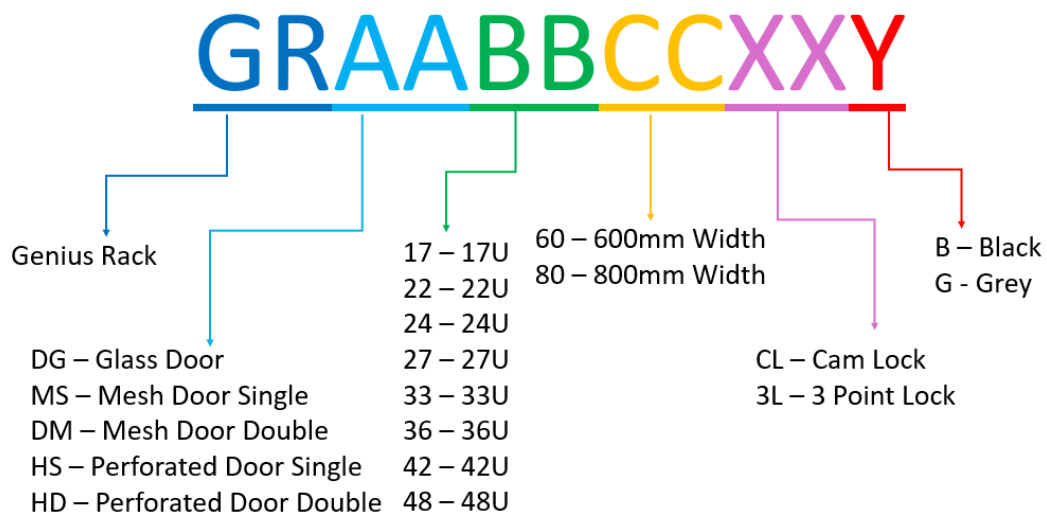


Mesh Door



Hexagonal
Perforated Door

Genius Rack Doors are designed to provide secure equipment protection, efficient airflow, and a professional appearance for modern data center environments. Available in Glass, Mesh, and Hexagonal Perforated designs, they ensure effective cooling and ventilation for high-density applications. Mesh and Hexagonal Perforated Doors are offered in single-door options for the front side and double-door options for the rear side for improved accessibility and airflow management. Built with robust construction and precision ventilation design for reliable long-term performance



Sample Product Description - Genius 17U 600W Mesh Door with 3Point Lock Black

Cable manager



Genius cable managers are available in loop style and closed loop (PVC) designs, ensuring efficient cable routing and organization in racks. Offered in 1U and 2U options, they support flexible and secure cable management for various applications. Finished in black and fully assembled, they provide a neat, structured, and professional cabling solution



Part Number	Product Description
GRCOLM1BXX	Genius Cable manager Loop style Black 1U
GRCCCP1BXX	Genius Cable manager Closed Loop Black PVC 1U
GRCCCP2BXX	Genius Cable manager Closed Loop Black PVC 2U

Power Distribution Unit

Genius Power Distribution Units (PDUs) are designed to provide safe, reliable, and efficient power distribution for data center racks and network cabinets. Available in both Zero U vertical and 19" horizontal mounting options, these PDUs support multiple socket configurations with 16A and 32A power ratings, dual circuit options, MCB protection, and DPST switch variants for enhanced safety and operational control. Built with a durable black finish and supplied in fully assembled condition, Genius PDUs ensure dependable performance, optimized power management, and easy integration for high-density IT and networking environments



Part Number	Product Description
GRPDZU06A1016MB	Genius Power Distribution Unit Zero U 06A 10 Socket 16A MCB Black
GRPDZU16A1032MB	Genius Power Distribution Unit Zero U 06/16A 10 Socket 32A MCB Black
GRPDZU16A1216DB	Genius Power Distribution Unit Zero U 06/16A 12 Socket Dual Circuit 16A MCB Black
GRPDZU16A1532MB	Genius Power Distribution Unit Zero U 06/16A 15 Socket Dual Circuit 32A MCB Black
GRPDHP06A6DSB	Genius Power Distribution Unit 19" 06A 6 Socket DPST Switch Black
GRPDHP16A616MB	Genius Power Distribution Unit 19" 06/16A 6 Socket 16A MCB Black

Hardware Kit

Genius Hardware Kit includes M6 screws, cage nuts, and washers for secure and reliable rack mounting. Available in convenient packs of 10 and 20 to suit various installation requirements



Part Number	Product Description
GRHW1SSCWXXXX	Genius Hardware Kit Pack of 10
GRHW2SSCWXXXX	Genius Hardware Kit Pack of 20

Rack Cooling Fan Unit

Genius Cooling Fan Units deliver efficient airflow with 90 CFM performance, ensuring optimal heat dissipation in rack systems. Available in 1, 2 or 4 fan configurations, they suit varying cooling requirements



Part Number	Product Description
GRFN91FXXXX	Genius 90 CFM Fan 1 Nos
GRFN92FXXXX	Genius 90 CFM Fan 2 Nos
GRFN94FXXXX	Genius 90 CFM Fan 4 Nos

Levelling Legs



Genius Rack Levelling Legs (Set of 4) designed for precise height adjustment and stable rack positioning on uneven surfaces. Heavy-duty construction with assembled design ensures easy installation and reliable load support

Part Number	Product Description
GRLXXXX4	Genius Levelling Legs Set of 4

Base Frame



Genius Rack Base Frame provides a strong foundation for stable and secure rack installation. Constructed from heavy-duty steel for high load-bearing capacity and structural rigidity. Designed with provisions for anchoring, cable entry, and easy integration with rack systems

Part Number	Product Description
GRBF6060WDB	Genius 600Wx600D Base Frame Black
GRBF6080WDB	Genius 600Wx800D Base Frame Black
GRBF6010WDB	Genius 600Wx1000D Base Frame Black
GRBF6012WDB	Genius 600Wx1200D Base Frame Black
GRBF8080WDB	Genius 800Wx800D Base Frame Black
GRBF8010WDB	Genius 800Wx1000D Base Frame Black
GRBF8012WDB	Genius 800Wx1200D Base Frame Black

Casters

Genius Casters (2" / 4") set of 4, designed for smooth mobility and stable load handling, supplied in assembled condition for easy installation. It Includes 2 braked and 2 non-braked wheels, ensuring controlled movement with reliable locking for secure equipment positioning



Part Number	Product Description
GRCR2I2B2WS4	Genius Casters 2" Set of 4 having 2 With and 2 Without Brake
GRCR4I2B2WS4	Genius Casters 4" Set of 4 having 2 With and 2 Without Brake

Bonding kit

Genius Bonding Kit Sets (150 mm / 482 mm) provide reliable grounding for rack systems, ensuring proper electrical continuity. Designed to interconnect metal components, reducing electrical resistance and enhancing operational safety



Part Number	Product Description
GRBK15MXXXX	Genius Bounding Kit Set 150 MM
GRBK48MXXXX	Genius Bounding Kit Set 482 MM

Shelves



Genius Cantilever Shelves & Fixed Shelves are designed for sturdy support of non-rack mount equipment, ensuring reliable performance in rack environments. Cantilever Shelves are Available in 1U (255 mm depth) and 2U (400 mm depth) variants and Fixed Shelves are available in 375mm, 550mm & 700mm Depth option. it suits diverse installation needs. Offered in Black and Grey color options, it blends seamlessly with standard rack systems

Part Number	Product Description
GRSH1U2BCS	Genius Cantilever Shelves 19" 1U 255 Depth Black
GRSH2U4BCS	Genius Cantilever Shelves 19" 2U 400 Depth Black
GRSH1U2GCS	Genius Cantilever Shelves 19" 1U 255 Depth Grey
GRSH2U4GCS	Genius Cantilever Shelves 19" 2U 400 Depth Grey
GRSH3DGYFS	Genius Fixed Shelves 375 Depth Grey
GRSH5DGYFS	Genius Fixed Shelves 550 Depth Grey
GRSH7DGYFS	Genius Fixed Shelves 700 Depth Grey
GRSH3DBKFS	Genius Fixed Shelves 375 Depth Black
GRSH5DBKFS	Genius Fixed Shelves 550 Depth Black
GRSH7DBKFS	Genius Fixed Shelves 700 Depth Black

Sliding Shelves

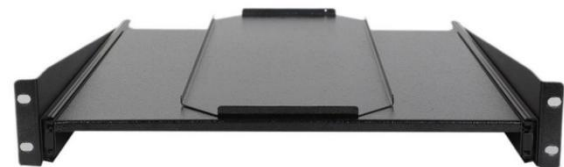
Genius Sliding Shelf offers smooth and secure equipment support for 19" racks. Available in Grey & Black finishes with 375 mm, 550 mm, and 700 mm depth options. Strong steel construction ensures durability and easy equipment access



Part Number	Product Description
GRSS3DXXB	Genius Sliding Shelves 375D Black
GRSS5DXXB	Genius Sliding Shelves 550D Black
GRSS7DXXB	Genius Sliding Shelves 700D Black
GRSS3DXXG	Genius Sliding Shelves 375D Grey
GRSS5DXXG	Genius Sliding Shelves 550D Grey
GRSS7DXXG	Genius Sliding Shelves 700D Grey

Key Board Tray - 19" Width - Rotatory

Genius 19" Rotatory Keyboard Tray is designed for convenient and space-saving keyboard operation inside standard racks. Its smooth rotatory mechanism allows easy access and comfortable usage during monitoring and maintenance tasks. Built with robust steel construction for durability and reliable performance in data center and networking environments. Available in Black and Grey Color



Part Number	Product Description
GRKBXXXXB	Genius 19" Keyboard Tray Black
GRKBXXXXG	Genius 19" Keyboard Tray Grey

Support Angle



Genius Supporting Kit features durable support angles for secure and stable equipment mounting inside racks. Available in 375mm, 550mm, and 700mm depths to suit various rack applications. Offered in Black and Grey colors with strong steel construction for long-lasting performance.

Part Number	Product Description
GRSA3DXXB	Genius Support Angle 375D Black
GRSA5DXXB	Genius Support Angle 550D Black
GRSA7DXXB	Genius Support Angle 700D Black
GRSA3DXXG	Genius Support Angle 375D Grey
GRSA5DXXG	Genius Support Angle 550D Grey
GRSA7DXXG	Genius Support Angle 700D Grey

Note – Illustrations shown in this datasheet are for reference only. Actual product may vary